



trodax[®]

Manual for
creating colour stamps

with Corel Draw
(English)

Contents

Creating stamp masters with Corel Draw

Creating a new master	3
Checking existing stamp masters.....	4
Checking imported elements.....	5
Creating and adjusting colours.....	6
Saving the file	7

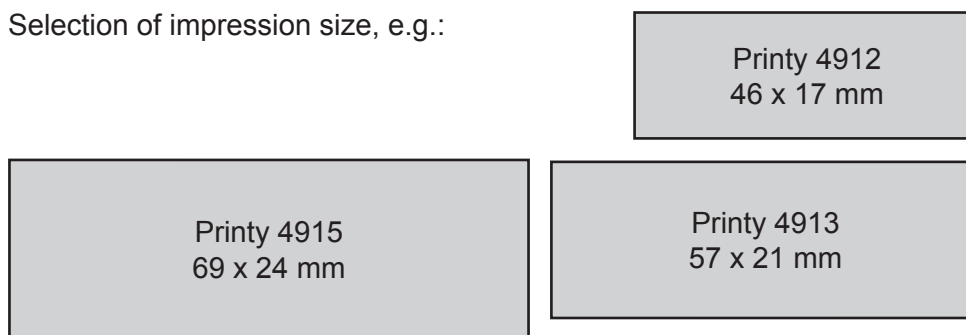
Creating stamp masters with Corel Draw

A few guidelines are needed in order to ensure further production when creating or adapting a stamp master with Corel Draw.

It is essential that you first decide whether you are creating a new stamp or adapting an existing stamp master. If you are creating a new stamp, the correct set-up is important. If you are adapting an existing stamp master, attention must be paid to checking the correct set-up.

Creating a new master:

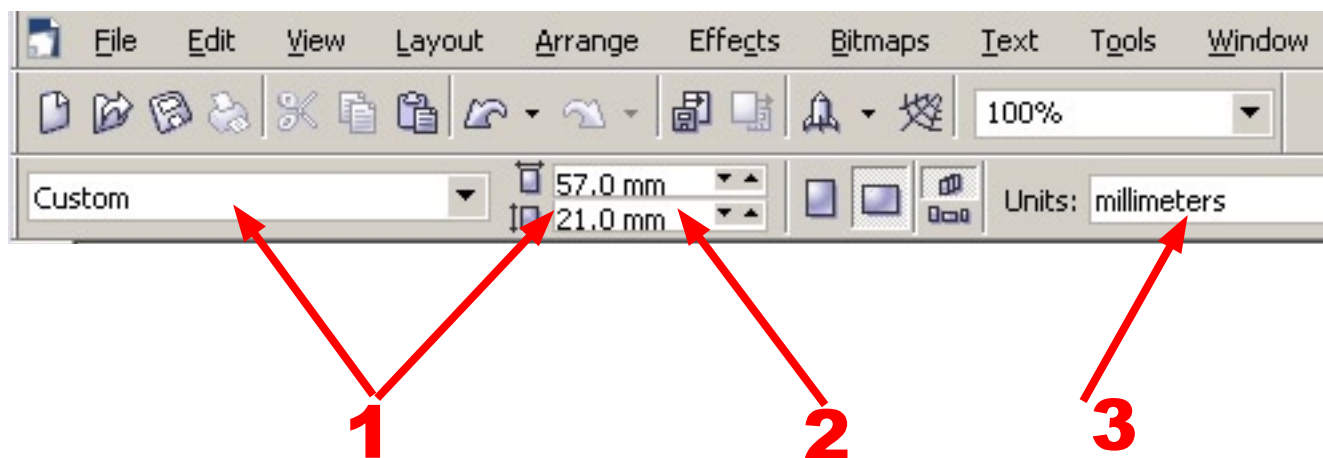
Selection of impression size, e.g.:



You will find a full list attached.
= mass from Trodat overlays!

Create a new document under the menu: "File" > "New"

1. The size of your document is not relevant in Corel Draw; the correct stamp format is only helpful for the shape of a stamp.
2. The size of the document can be freely defined in the Property Bar.
3. The unit of measurement can also be adjusted in the Property Bar.

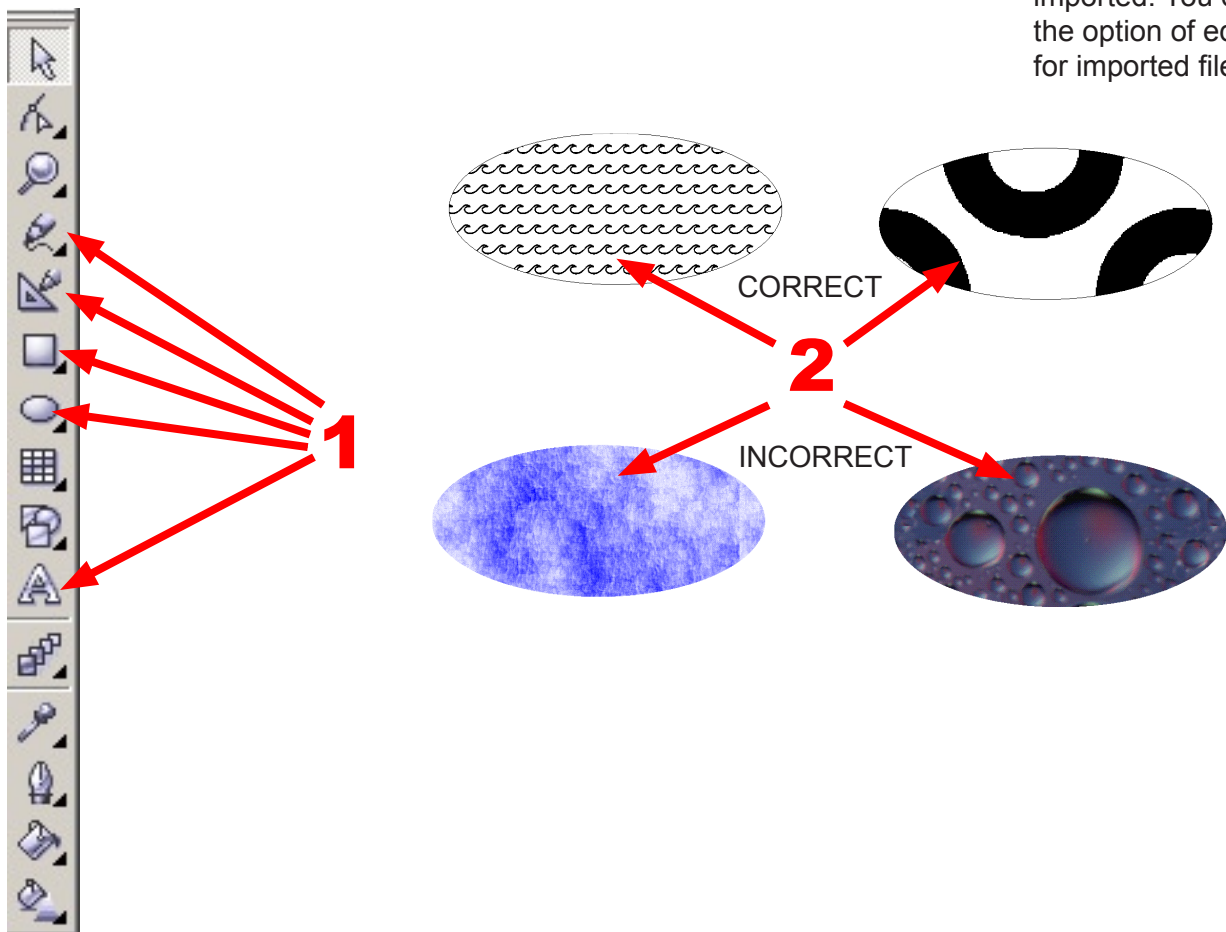


Checking existing stamp masters:

Open an existing Corel Draw file under “File” - “Open” and check the configuration:

- 1 As Corel Draw is vector-based, text and shapes can be created in any type and/or with any tool.
- 2 It is important that objects with a special fill are not filled with colour gradients or special effects which require a soft colour transition. The four colours red, green, blue and black are available for the colouring process.

Note:
Only .cdr (Corel Draw) files can be opened in Corel Draw. Other file formats must be imported. You do not have the option of editing this for imported files.



Checking the colouring process is described in detail on page 6.

Otherwise only the stamp master guidelines need to be taken into account:

- Size of the stamp
- Distance of the different colours from one another

Checking imported elements:

It is difficult to conduct a check for imported files.

It is advisable to always revert to an original file (Corel Draw file), as the majority of errors develop when a vector file is saved in another format. If this procedure is saved to begin with, it cannot be reversed in the file later.

The file must be saved as a NEW file from the original file or it has to be exported!

- 1 The elements are created and/or saved WITHOUT soft edges.
To check the soft edges, use the magnifying glass tool and zoom into the various elements to at least 500 %.
If elements in your master have soft edges, they must be re-created in Corel Draw!



- 2 The colours cannot be controlled with imported files!
Therefore we are concerned with the original file, i.e. the Corel Draw file!

Creating and adjusting colours:

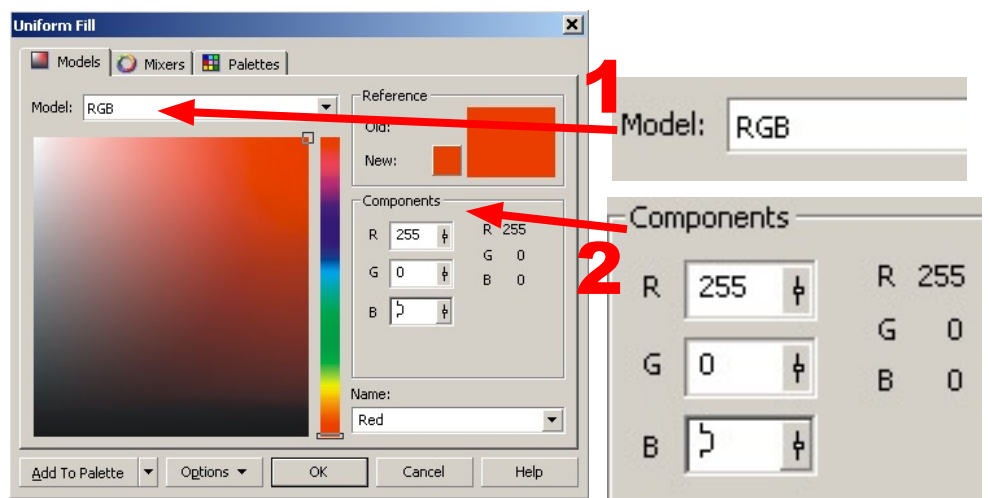
There are a total of 4 colours available for creating a stamp:
Red, green, blue and black.

These must be precisely defined in order to be able to change the graphic.
Corel Draw provides you with several options of defining the colours and/or colouring an object.



When colouring via the Object Properties it is important to check the colours under the “Advanced” option.

1. It is important to set RGB for the Model option.
2. It is important to enter the correct values for the components.



The values for each must be entered with 0 and 255. Values in between will not work!

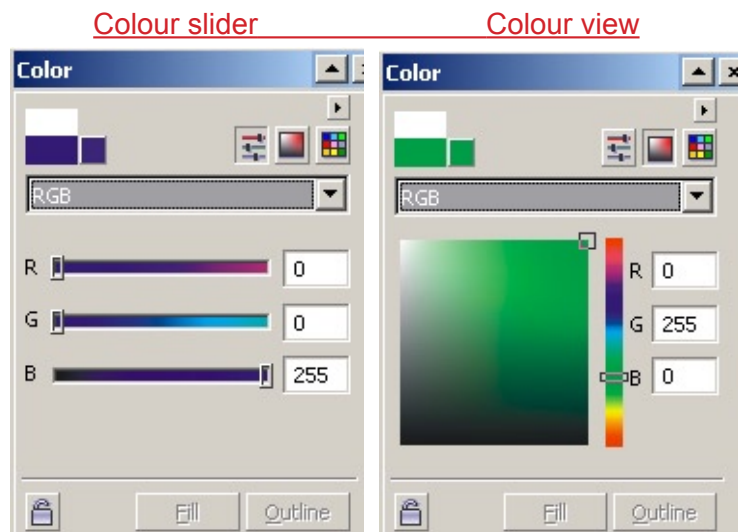
Colour settings:

- Red: R=255 / G=0 / B=0
- Green: R=0 / G=255 / B=0
- Blue: R=0 / G=0 / B=255
- Black: R=0 / G=0 / B=0

The same settings also apply when you adjust the colours via the Color Palette.
There are two views in this palette:

- the colour slider
- the colour view

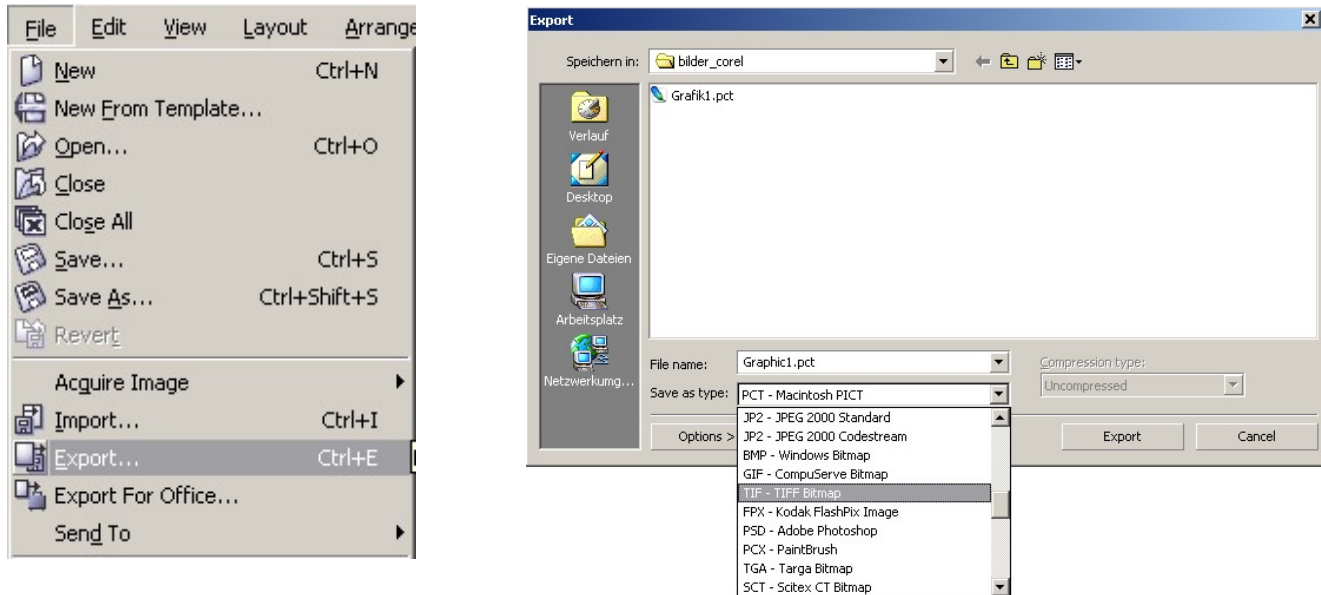
However, it is recommended that you enter the numerical values.



Saving the file:

Select “Save As” from the “File” menu and **save your** stamp master as a .CDR file (Corel Draw file). Select a name; it is recommended that you choose a name that does not contain any **umlauts or special symbols**.

You have to export the file to upload it to the Trodat Shop. You can find this option under “File” > “Export”.



Select your desired file format in the subsequent “Export” window. You can choose from a variety of formats.

Various formats are also accepted and processed in the Trodat Shop.

Corel Draw does not save all file formats in such a way that is required in the Shop. A condition for the file formats that you can use is the “**Anti-aliasing**” setting in the file format option window.

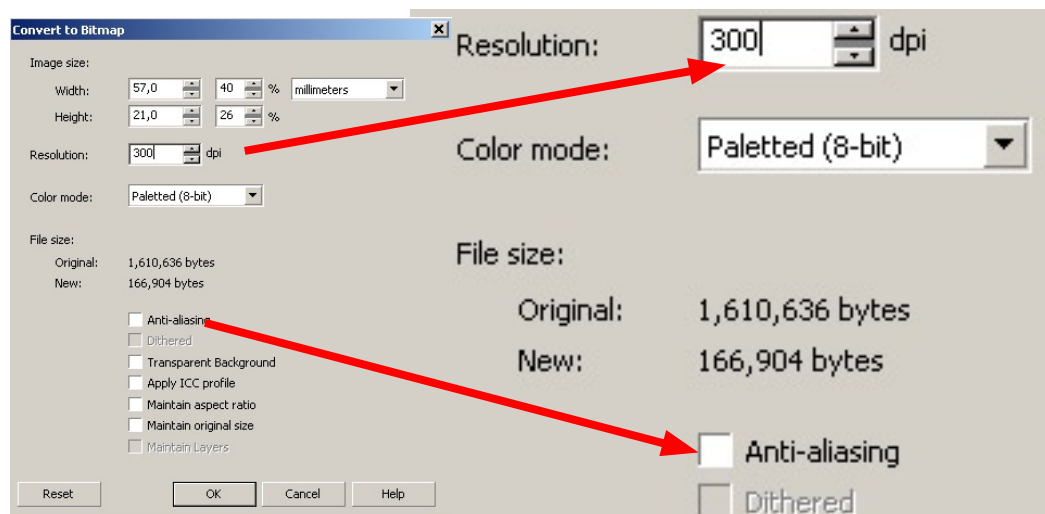
It is imperative that this option is unchecked!

This file format cannot be used if this option is unavailable.

Also make sure that you set the **resolution to 300 dpi**.

Safe file formats:

- TIF
- BMP
- GIF
- PNG



Your file is now ready to upload for stamp creation!